

The logo for PreEmpt, featuring the word "Pre" in white on a blue background and "Empt" in white on a white background with a blue shadow effect.

Professional Cockroach Gel Bait

**Intended for the control of cockroaches,
including German, American, Smokey
Brown, Oriental and other cockroach
species.**

ACTIVE INGREDIENTS:

Imidacloprid, 1[(6-Chloro-3-pyridinyl) methyl]-nitro-2-imidazolidinimine.....	2.15%
INERT INGREDIENTS.....	97.85%
	100.0%

EPA REG. No. 432-1365-9444 EPA Est. No. 9444-LA-1

NET WEIGHT 0.63 oz/18 g

©PRE-EMPT is a Registered Trademark of Bayer

**STOP – Read the label before use.
KEEP OUT OF REACH OF CHILDREN
CAUTION**

Distributed by
WATERBURY COMPANIES, IN.
P.O. Box 1812 • Waterbury, CT 06722

PRE-EMPT PROFESSIONAL COCKROACH GEL BAIT PRECAUTIONARY STATEMENTS HAZARDS TO HUMANS & DOMESTIC ANIMALS CAUTION

Causes moderate eye irritation. Avoid contact with eyes or clothing. Wash thoroughly with soap and water after handling.

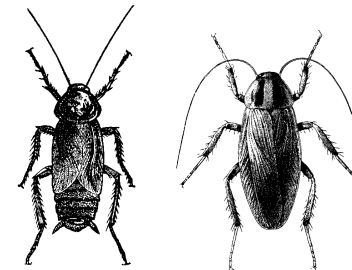
FIRST AID

If Swallowed: Call a poison control center or doctor immediately for treatment advice. Have person sip a glass of water if able to swallow. Do not induce vomiting unless told to by a poison control center or doctor. Do not give anything by mouth to an unconscious person. **If In Eyes:** Hold eye open and rinse slowly and gently with water for 15-20 minutes. Remove contact lenses, if present, after the first 5 minutes, then continue rinsing eye. Call a poison control center or doctor for treatment advice. **If On Skin Or Clothing:** Take off contaminated clothing. Rinse skin immediately with plenty of water for 15-20 minutes. Call a poison control center or doctor for treatment advice. **Hot Line Number:** Have the product container or label with you when calling a poison control center or doctor, or going for treatment. You may also contact 1-800-334-7577 for emergency medical treatment information.

STORAGE & DISPOSAL

Do not contaminate water, food or feed by storage or disposal.

Pesticide Storage: Store in a cool, dry place and in such a manner as to prevent cross contamination with other pesticides, fertilizers, food and feed. Store in original container and out of the reach of children, preferably in a locked storage area. Handle an open container in a manner as to prevent spillage. If the container is leaking or material is spilled for any reason or cause, carefully remove spilled gel and wash exposed area. Refer to Precautionary Statements on label for hazards associated with the handling of this material. Do not walk through spilled material. Dispose of pesticide as directed above. In spill or leak incidents, keep unauthorized people away. You may contact the Bayer Environmental Science Emergency Response Team for decontamination procedures or any other assistance that may be necessary. The Bayer Environmental Science Emergency Response Telephone No. is 1-800-334-7577 or contact Chemtrec at 800-424-9300. **Pesticide Disposal:** Wastes resulting from the use of this product may be disposed of on site or at an approved waste disposal facility. **Container Disposal:** Wrap used cartridge in paper and place in trash.



Professional Cockroach Gel Bait

PRECAUTIONARY STATEMENTS HAZARDS TO HUMANS & DOMESTIC ANIMALS CAUTION

Causes moderate eye irritation. Avoid contact with eyes or clothing. Wash thoroughly with soap and water after handling.

FIRST AID

If Swallowed: Call a poison control center or doctor immediately for treatment advice. Have person sip a glass of water if able to swallow. Do not induce vomiting unless told to by a poison control center or doctor. Do not give anything by mouth to an unconscious person. **If In Eyes:** Hold eye open and rinse slowly and gently with water for 15-20 minutes. Remove contact lenses, if present, after the first 5 minutes, then continue rinsing eye. Call a poison control center or doctor for treatment advice. **If On Skin Or Clothing:** Take off contaminated clothing. Rinse skin immediately with plenty of water for 15-20 minutes. Call a poison control center or doctor for treatment advice. **Hot Line Number:** Have the product container or label with you when calling a poison control center or doctor, or going for treatment. You may also contact 1-800-334-7577 for emergency medical treatment information.

DIRECTIONS FOR USE

It is a violation of Federal law to use this product in a manner inconsistent with its labeling.

IMPORTANT: READ BEFORE USE: Read the entire Directions for Use, Conditions, Disclaimer of Warranties and Limitations of Liability before using this product. If terms are not acceptable, return the unopened product container at once. By using this product, user or buyer accepts the following conditions, disclaimer of warranties and limitations of liability.

GENERAL INFORMATION

PRE-EMPT PROFESSIONAL COCKROACH GEL BAIT is intended for the control of cockroaches, including German, American, Smokey Brown, Oriental and other cockroach species. Apply as a spot and/or crack and crevice application to spaces with structures, their walls and ceilings (both inside and out), and the immediate adjacent surrounding grounds. Such structures include, but are not limited to, residential (e.g. houses, apartments), commercial, industrial, and institutional buildings (e.g. restaurants, supermarkets, offices, hospitals, nursing homes, schools, warehouses, hotels, motels, and utilities) agricultural structures (eg: barns, livestock housing facilities), pet kennels, zoos, and on various modes of transport (e.g. aircraft, buses, trucks, trailers, rail cars, and marine vessels).

SPOT OR CRACK AND CREVICE APPLICATIONS

Spot Treatments: PRE-EMPT should be applied as spots or droplets of approximately 4 to 6 mm in diameter. Approximately 10 droplets per 100 sq. ft. is recommended for use under conditions with low to moderate insect infestations. Approximately 20 droplets per 100 sq. ft. is recommended for more severe infestations or where the population occurs in inaccessible locations, such as in wall voids. Under most circumstances, more numerous, smaller bait placements will provide faster and more effective control than fewer large placements.

Crack and Crevice Treatments: PRE-EMPT may also be applied as a bead or thin film where appropriate. Bait should be applied into cracks and crevices in which insects hide or through which they may enter the building. Such openings commonly occur at expansion joints, between different elements of construction, between, behind or under various types of equipment such as cabinets, refrigerators, sinks, stoves, dishwashers, and through floors, doors, windows, walls and ceilings. These openings may lead to voids such as hollow walls, hollow equipment legs and bases, utility entrances, electrical conduit, junction and switch boxes, and wall and floor drain exits. Trapping techniques or spot flushing will aid in determining areas with insect activity. Apply PRE-EMPT by placing the applicator tip directly into cracks and crevices and other openings or voids where insects may hide or harbor and deposit the bait as multiple spots or as a continuous bead. Care should be taken to avoid depositing the product onto open or exposed surfaces. During follow up visits, inspect bait placements and reapply as needed. If bait is completely consumed, reapply in the same location, as many insects (such as cockroaches) leave behind secretions and droppings to attract other insects to harborages and food sources. Do not use this product where a possibility of a shock hazard exists.

Food/Feed Handling Establishment Applications: Application within food/feed areas of food/feed handling establishments is limited to crack and crevice treatment only. Apply with syringe applicator directly into cracks and crevices. Place the applicator tip 1/2 inch into cracks, crevices, holes and other small openings where roaches may be a problem. Apply a small amount of gel (up to 1/2 gram) per spot. Do not apply bait to areas where food/feed, food utensils or food processing surfaces may become contaminated. Do not apply bait to areas that are routinely washed such as cracks and crevices in tops of tables, food/feed preparation and prepared food holding surfaces as bait may be removed by washing. Do not apply bait to surfaces where the temperature exceeds 130°F as bait may run. Examples include, but are not limited to, portions of stoves, ovens, grills, fume hoods, heat lamps, coffee urns, steam tables, toasters, fryers, dishwashers and hot water pipes. Care should be taken to avoid depositing gel to exposed surfaces. If gel contacts an exposed surface, remove gel and wash exposed surface. Food/feed areas include areas for receiving, storage, packing (canning, bottling, wrapping, boxing), preparing edible waste storage, and enclosed processing systems (mills, dairies, edible oils, syrups). Serving areas are also considered a food/feed area when food is exposed and facility is in operation. Apply bait in small amounts between different elements of construction, between equipment and floors, openings leading into voids, and hollow spaces in floors, walls, ceilings, equipment legs and bases, around plumbing pipes, doors and windows, behind and under refrigerator, cabinets, sinks, closets, stoves, and other equipment where cockroaches hide. During follow-up visits inspect bait placements and reapply when necessary. **Application of this product in food/feed areas of food/feed handling establishments other than crack and crevice treatment is not permitted.**

Indoor Pest Control: For indoor uses, make applications in a manner previously described above under "Spot or Crack and Crevice Applications." Particular attention should be given to treating entry points and harborage areas. Place the applicator tip into cracks, crevices, voids, holes and other small openings where insects may hide. Apply a small amount of bait (up to 1/2 gram/spot) or as a bead or film at insect activity sites. Cleaning of all areas prior to use of PRE-EMPT will increase levels of control. Any foodstuffs infested with insect pests should be removed and destroyed. Applications to furniture should be restricted to those areas where contact to humans will not occur. Applications to textiles or fabrics may cause discoloration or staining.

Outdoor Pest Control: Apply PRE-EMPT as a spot, bead or thin film to outside surfaces of buildings, porches, patios, door and window openings, crawl spaces, air conditioning units, utility entrances through outside walls, under siding/molding, in garages and other adjacent areas where pests have been seen or found. To prevent infestations, treat areas adjacent to structures where pests may be active and may find nesting sites or harborage. Applications should be made to substrates adjacent to buildings, the building foundations, wall voids, attic and soffit vents, expansion joints, around doors and windows, soffit areas, eaves, under stairways, around screens, on fences, trees and other areas conducive to infestation. Do not apply PRE-EMPT to areas that have been recently sprayed with insecticides, and do not spray insecticides over gel, as it may cause the bait to become repellent.

STORAGE & DISPOSAL

Do not contaminate water, food or feed by storage or disposal.

Pesticide Storage: Store in a cool, dry place and in such a manner as to prevent cross contamination with other pesticides, fertilizers, food and feed. Store in original container and out of the reach of children, preferably in a locked storage area. Handle an open container in a manner as to prevent spillage. If the container is leaking or material is spilled for any reason or cause, carefully remove spilled gel and wash exposed area. Refer to Precautionary Statements on label for hazards associated with the handling of this material. Do not walk through spilled material. Dispose of pesticide as directed above. In spill or leak incidents, keep unauthorized people away. You may contact the Bayer Environmental Science Emergency Response Team for decontamination procedures or any other assistance that may be necessary. The Bayer Environmental Science Emergency Response Telephone No. is 1-800-334-7577 or contact Chemtrec at 800-424-9300. **Pesticide Disposal:** Wastes resulting from the use of this product may be disposed of on site or at an approved waste disposal facility. **Container Disposal:** Wrap used cartridge in paper and place in trash.

CONDITIONS: The directions for use of this product are believed to be adequate and should be followed carefully. However, because of manner of use and other factors beyond Bayer Environmental Science's control it is impossible for Bayer Environmental Science to eliminate all risks associated with the use of this product. As a result, crop injury or ineffectiveness is always possible. All such risks shall be assumed by the user or buyer. **Disclaimer of Warranties:** BAYER ENVIRONMENTAL SCIENCE MAKES NOT OTHER WARRANTIES, EXPRESS OR IMPLIED, OF MERCHANTABILITY OR OF FITNESS FOR A PARTICULAR PURPOSE OR OTHERWISE, THAT EXTEND BEYOND THE STATEMENTS MADE ON THIS LABEL. No agent of Bayer Environmental Science is authorized to make any warranties beyond those contained herein or to modify the warranties contained herein. Bayer Environmental Science disclaims any liability whatsoever for special, incidental or consequential damages, resulting from the use or handling of this product. **Limitations of Liability:** THE EXCLUSIVE REMEDY OF THE USER OR BUYER FOR ANY AND ALL LOSSES, INJURIES OR DAMAGES RESULTING FROM THE USE OR HANDLING OF THIS PRODUCT, WHETHER IN CONTRACT, WARRANTY, TORT, NEGLIGENCE, STRICT LIABILITY OR OTHERWISE, SHALL NOT EXCEED THE PURCHASE PRICE PAID, OR AT BAYER ENVIRONMENTAL SCIENCES ELECTION, REPLACEMENT OF THE PRODUCT.

EPA Reg. No. 432-1365-9444 EPA Est. No. 9444-LA-1
908125 041999A 00168802



Distributed by
WATERBURY COMPANIES, INC.
P.O. Box 1812 • Waterbury, CT 06722
985-878-6751 • Made in Germany